

Global Bike

Curriculum: Introduction to S/4HANA using Global Bike

Teaching material - Information

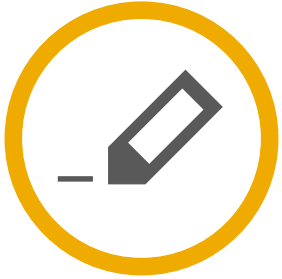


Teaching material - Version

- 4.3 (July 2025)
- Software used
 - SAP S/4HANA 2023
- Model
 - Global Bike
- Prerequisites
 - No Prerequisites needed



Module Information



Authors

- Simha Magal
- Stefan Weidner
- Jeff Word



Target Audience

- Beginner

Module Information



Learning Objectives

At the completion of this module, you should be able to:

- Describe the story of the Global Bike Group
- Draw the organizational structures of the Global Bike Group
- Describe the essential characteristics of the products and business partners of the Global Bike Group.
- List the business processes of the Global Bike Group.

Agenda

- Global Bike Group
- Organizational Structure
- Products
- Business Partners
- Business Processes

Global Bike Group

- Background:
 - Global concern using full ERP capabilities
 - Consists of two companies located in the US and in Germany
- History:
 - **John Davis** won numerous mountain bike championships in the US
 - In 1990, started his own mountain bike company (Frankenstein Bikes)
 - **Peter Schwarz** grew up on road bikes in the Black Forest, Germany
 - As a student, he engineered ultra-light composite frames
 - In 1993, started his own bike frame company (Heidelberg Composites)
 - Both met in 2000
 - In 2001, merged to form Global Bike Inc.

Global Bike Group

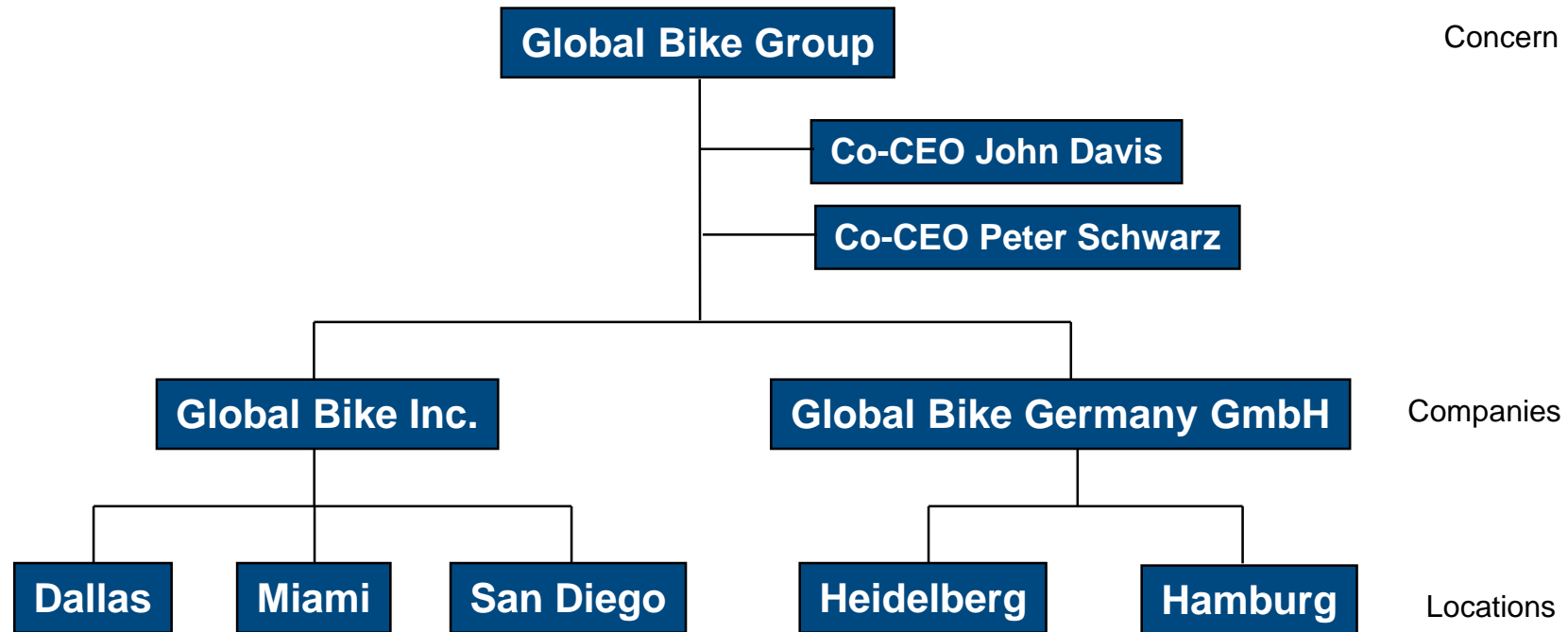
- Strategy:

- John and Peter are Co-CEOs
- John is responsible for (in terms of reporting)
 - Sales, Marketing, Service and Support, IT, Finance, and Human Resources
 - sells products and brings in money
- Peter is responsible for
 - Research, Design, Procurement, and Manufacturing Groups
 - builds products and spends money
- World-class bicycle company serving both the professional and “prosumer” in touring and off-road racing.
- Focus on:
 - Quality
 - Toughness
 - Performance

Agenda

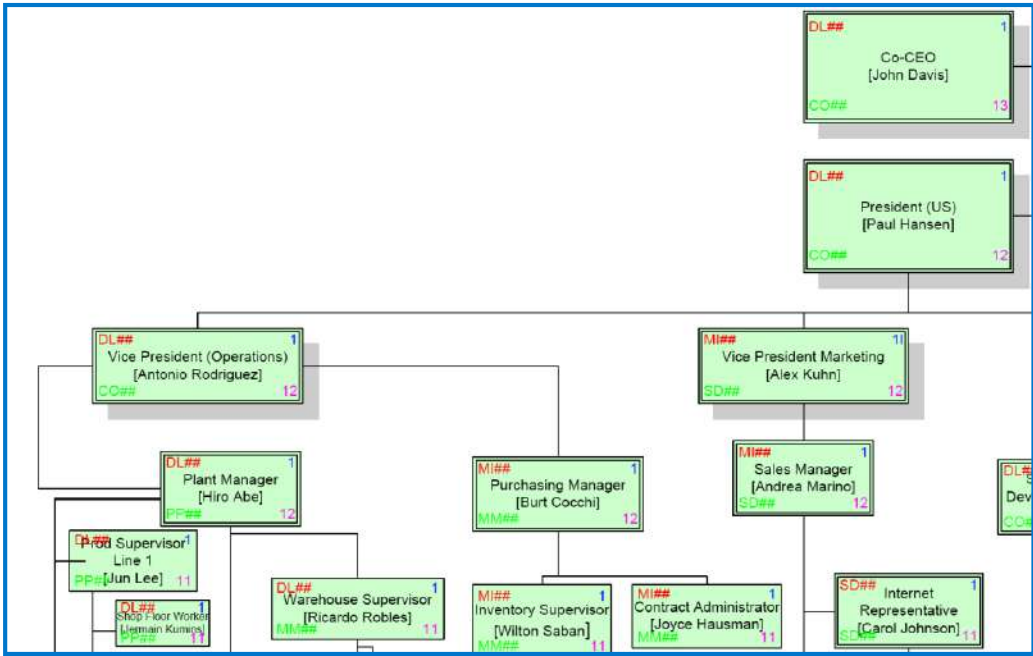
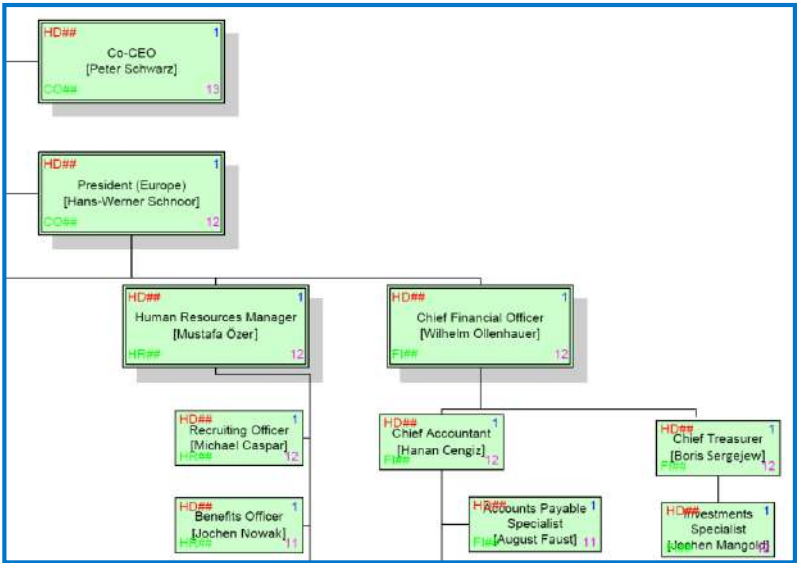
- Global Bike Group
- **Organizational Structure**
- Products
- Business Partners
- Business Processes

Organizational Structure (Overview)



Organizational Structure (Human Resources)

- Employees (US and Germany)



Agenda

- Global Bike Group
- Organizational Structure
- **Products**
- Business Partners
- Business Processes

Products

■ Trading Goods

- Accessories
 - Safety Gear
 - Other

AIR PUMP	EN	PUMP1000
DELUXE RENTAL BIKE	EN	DXRB1000
ELBOW PADS	EN	EPAD1000
FIRST AID KIT	EN	FAID1000
KNEE PADS	EN	KPAD1000
OFF ROAD HELMET	EN	OHMT1000
REPAIR KIT	EN	RKIT1000
ROAD HELMET	EN	RHMT1000
T-SHIRT	EN	SHRT1000
WATER BOTTLE	EN	BOTL1000
WATER BOTTLE CAGE	EN	CAGE1000

■ Raw Materials

BRAKE KIT	EN	BRKT1000
CAN BOTTOM PART	EN	DOUT1000
CAN UPPER PART (BLUE)	EN	DOOT1000
CARBON COMPOSITE WHEEL	EN	CCWH1000
CASING	EN	CSNG1000
CHAIN	EN	CHAN1000
CIRCULATION FAN FILTER	EN	FLTR1000
CLEARCOAT POWDER	EN	CCPW1000
DERAILLEUR GEAR ASSEMBLY	EN	DGAM1000
DISPLAY COVERAGE	EN	DPCV1000
HEX NUT 5 MM	EN	HXNT1000
LOCK WASHER 5 MM	EN	LWSH1000
MEN'S OFF ROAD FRAME	EN	OFFR1000
OFF ROAD ALUMINUM WHEEL	EN	ORWH1000
OFF ROAD CIRCUIT BOARD	EN	ORCB1000
OFF ROAD HANDLE BAR	EN	ORHB1000
OFF ROAD SEAT KIT	EN	ORSK1000
OFF ROAD TIRE	EN	ORTR1000
OFF ROAD TUBE	EN	ORTB1000
PACKAGING	EN	PCKG1000
PEDAL ASSEMBLY	EN	PEDL1000
PUSHBUTTON	EN	PSBT1000
SOCKET HEAD BOLT 5X20MM	EN	BOLT1000
TOURING ALUMINUM WHEEL	EN	TRWH1000

Products

■ Semi-Finished Goods

BASIC CASING	EN	BCSG1000
CARBON COMPOSITE WHEEL ASSEMBLY	EN	CCWA1000
OFF ROAD ALUMINUM WHEEL ASSEMBLY	EN	ORWA1000
OFF ROAD BIKE COMPUTER SEMI-FINISHED	EN	ORSC1000
TOURING ALUMINUM WHEEL ASSEMBLY	EN	TRWA1000

■ Finished Goods

- Touring Bikes (Deluxe, Professional) in three colors
- Off-Road Bikes (Men, Women)
- GPS-Bike Computer

DELUXE GPS-BIKE COMPUTER CARMINE RED	EN	DGRR2000
DELUXE GPS-BIKE COMPUTER ROYAL BLUE	EN	DGRB2000
DELUXE GPS-BIKE COMPUTER SILVER WHITE	EN	DGRW2000
DELUXE TOURING BIKE (BLACK)	EN	DXTR1000
DELUXE TOURING BIKE (RED)	EN	DXTR3000
DELUXE TOURING BIKE (SILVER)	EN	DXTR2000
GLOBAL BIKE ENERGY (BLUE)	EN	GBEN1000
GLOBAL BIKE ENERGY (RED)	EN	GBEN2000
GPS-BIKE COMPUTER ROAD 64GB CARMINE RED	EN	GRRL2000
GPS-BIKE COMPUTER ROAD 64GB ROYAL BLUE	EN	GRBL2000
GPS-BIKE COMPUTER ROAD 64GB SILVER WHITE	EN	GRWL2000
MEN'S OFF ROAD BIKE	EN	ORMN1000
OFF ROAD BIKE COMPUTER	EN	ORBC1000
PROFESSIONAL TOURING BIKE (BLACK)	EN	PRTR1000
PROFESSIONAL TOURING BIKE (RED)	EN	PRTR3000
PROFESSIONAL TOURING BIKE (SILVER)	EN	PRTR2000
WOMEN'S OFF ROAD BIKE	EN	ORWN1000

Agenda

- Global Bike Group
- Organizational Structure
- Products
- **Business Partners**
- Business Processes

Business Partners

■ Customers (US and Germany)

Business Partner	Street	City	Postal Code	Country/Region
Rocky Mountain Bikes 125000	3001 Elm St	Denver	80207	US
Big Apple Bikes 126000	95 Morton St	New York City	10014	US
Philly Bikes 127000	20 Pine St	Philadelphia	19073	US
Peachtree Bikes 128000	2001 Summit Boulevard	Atlanta	30319	US
Beantown Bikes 129000	299 Summer St	Boston	02210	US

Business Partner	Street	City	Postal Code	Country/Region
Airport Bikes 137000	Im Schwalbennest	Neu-Isenburg	63263	DE
Alster Cycling 138000	Loogestieg	Hamburg	20249	DE
Bavaria Bikes 139000	Rappenweg	München	81829	DE
Capital Bikes 140000	Reichenberger Straße	Berlin	10999	DE
Cruiser Bikes 141000	Nienhagener Straße	Hannover	30629	DE

■ Vendors (US and Germany)

Business Partner	Street	City	Postal Code	Country/Region
Olympic Protective Gear 101000	2100 Summit Boulevard	Atlanta	30319	US
Boomtown Tire & Wheel 102000	312 Walnut ST	Cincinnati	45202	US
Dallas Bike Basics 103000	5215 N O'Connor Blvd	Irving	75039	US
Lightbulb Accessory Kits 104000	499 Thornall St	Edison	88837	US
Space Bike Composites 105000	10111 Richmond Ave	Houston	77042	US

Business Partner	Street	City	Postal Code	Country/Region
Burgmeister Zubehör OHG 113000	Illerstraße	Braunschweig	39120	DE
Pyramid Biking 114000	Hofstraße	Bielefeld	33647	DE
ABS Brakes GmbH 115000	Blosenburgerstraße	Erfurt	99099	DE
Flat Tire and More 116000	Tambourweg	Mannheim	68167	DE
Gummi Schultze 117000	Strählerweg	Karlsruhe	76228	DE

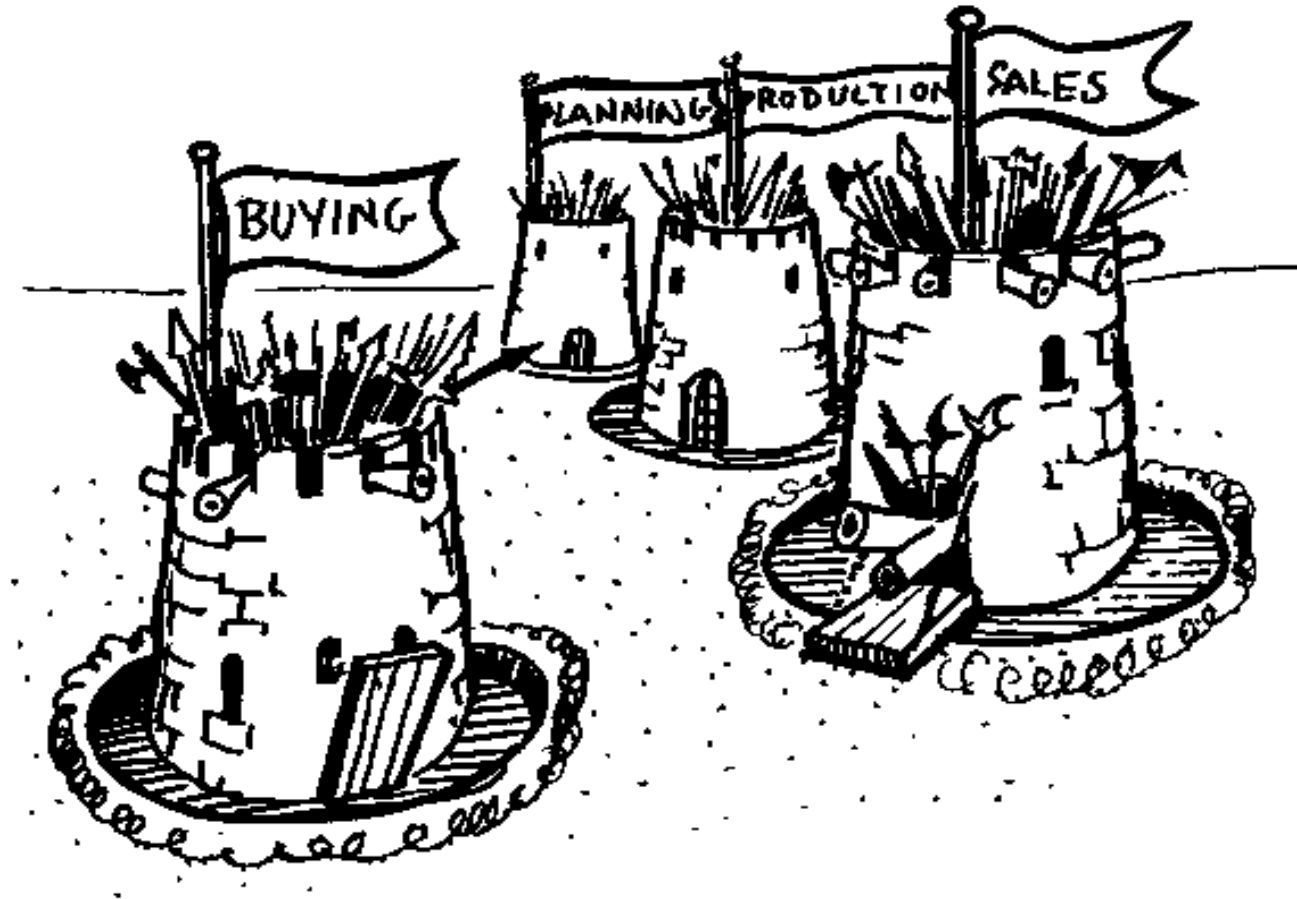
Agenda

- Global Bike Group
- Organizational Structure
- Products
- Business Partners
- **Business Processes**

Business Processes

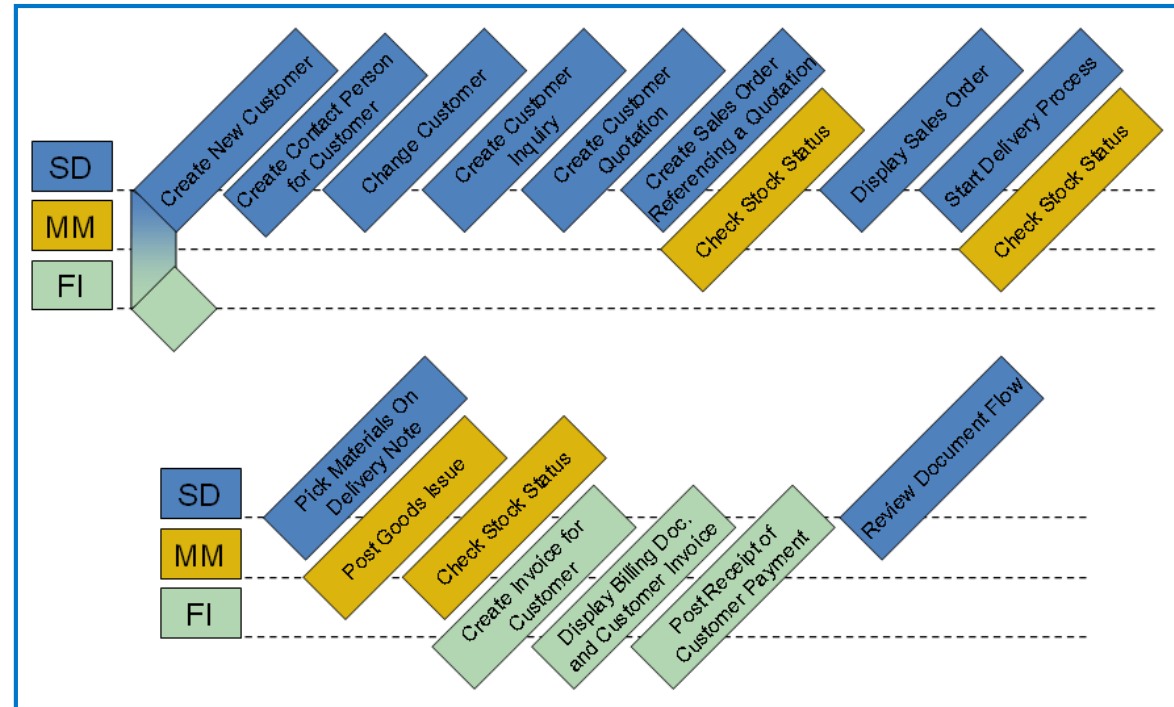
- Sell – Fulfillment
- Buy – Procurement
- Make – Production
- Track – Financial Accounting
- Track – Controlling
- People – Human Capital Management
- Store – Inventory and Warehouse Management
- Maintain – Enterprise Asset Management
- Service – Customer Service
- Project – Project Management
- Environment – Environment, Health and Safety

Cross-functional Integration



Process Integration (Example)

- Order-to-Cash Process
 - Sales and Distribution (SD)
 - Materials Management (MM)
 - Financial Accounting (FI)



Process Integration (Example)

- Procure-to-Cash Process
 - Materials Management (MM)
 - Financial Accounting (FI)

